

## Where is a colonoscopy done?

**A colonoscopy will be done at an outpatient center.**

- There are special drinks that you will need to drink 1 or 2 days before the test.
- A doctor that takes care of illnesses in the digestive system will do the test.
- During the test, you will be given medicine to make you feel sleepy and help you relax.

**A nurse will tell you how to get ready for this test.**



## Ask Your Healthcare Provider:

- ✓ When should I have a colonoscopy?
- ✓ What are the risks of a colonoscopy?
- ✓ Can I bring someone with me to the colonoscopy?

**Write your questions down before you go into the office.**

Cancer in the colon and rectum is mostly preventable when found early. However, it remains the leading cause of cancer deaths.

Talk to your healthcare provider about getting a colonoscopy.

**It could save your life!**

## COLONOSCOPY



**What is a colonoscopy?**



Cornell Scott-Hill Health Center  
400-428 Columbus Ave., New Haven, CT 06519  
(203) 503-3000 • [www.HillHealthCenter.com](http://www.HillHealthCenter.com)

## Do I need a colonoscopy?

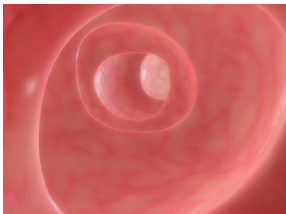
### You need a colonoscopy if:

- You are **50 or older**, *or*
- You are younger than 50, but have a **family history** of colon cancer

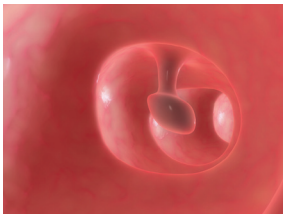
### You need a colonoscopy to find the cause of:

- bleeding in your stool
- diarrhea that won't stop
- belly pain that will not go away
- test results that are not normal (stool or barium enema test)

***A colonoscopy will also check for polyps (growths on the inside of the intestine).***

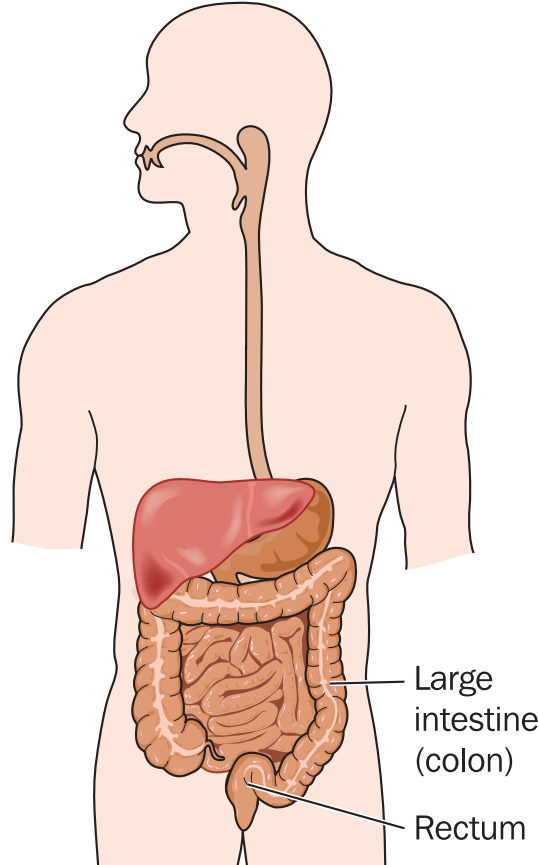


Healthy colon



Colon with a polyp

## Where are the rectum and colon?



## What happens during a colonoscopy?

- A doctor will look inside your rectum and colon with a thin tube.
- A video camera is attached to the tube. The doctor can take pictures or a video.
- The test will look for:
  - Polyps
  - Tumors
  - Swelling
  - Redness
  - Bleeding
- If the doctor finds something, it might be removed during the colonoscopy.
- Sometimes the doctor will take out a small piece of tissue (biopsy) to have it tested.

**Polyps can become cancerous if they are not removed.**